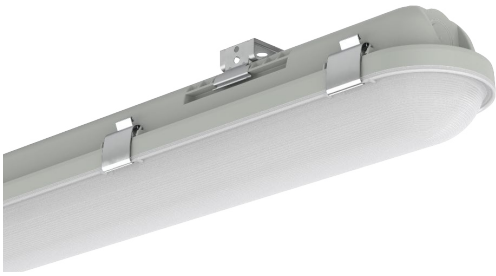




LUXPOINT® LED Waterproof Batten - Lando Datasheet



CE UK CA IP65 IK08

The Lando series LED Waterproof Batten is built for durability, featuring IK65 impact resistance and IK08 ingress protection. Ideal for outdoor and industrial settings, it provides reliable illumination in wet or dusty conditions. Its energy-efficient design ensures long-lasting performance, while the rugged construction withstands physical impacts. Available in various lengths, it offers versatile installation options, perfect for warehouses, garages, and outdoor areas where safety and efficiency are essential.

Benefits

- Durability
- Energy Efficiency
- Versatility of Size
- Wide Range of Application
- High protection rating

Applications

- Warehouse
- Factories
- Parking garages
- Other demanding environments

LUXPOINT® LED Waterproof Batten - Lando

Technical Data

Optical Specifications

Wattage		20W	34W	68W
Luminous Flux @CCT	3000K	2800lm	4760lm	9520lm
	4000K	3000lm	5100lm	10200lm
	5000K	3000lm	5100lm	10200lm
	6500K	3000lm	5100lm	10200lm
Total luminous flux of contained light sources @CCT	3000K	3000lm	5100lm	10200lm
	4000K	3200lm	5400lm	10500lm
	5000K	3200lm	5400lm	10500lm
	6500K	3200lm	5400lm	10500lm
Efficacy		150lm/W		
Flickering metric (Pst LM)		<1	<1	<1
Stroboscope effect metric (SVM)		<0.4	<0.4	<0.4
CRI		≥80	≥80	≥80
SDCM		< 6	< 6	< 6
Beam Angle		120°		
Photobiological safety group acc. To EN62778		RG0	RG0	RG0
Photobiological safety group acc. To EN62471		RG0	RG0	RG0
Dimmable		No	No	No

Electrical and Mechanical Specifications

Input Voltage		220-240V ~50/60Hz		
Nominal Current		90mA	150mA	300mA
Inrush current time Th50		198µs@22A	204µs@24A	210µs@30A
Power Factor		0.9	0.9	0.9
Max. number of luminaires per miniature circuit breaker	B16	37	13	11
	C10	30	12	10
	C16	48	19	16
Protection class		Class I	Class I	Class I
Dimensions	L	600mm	1200mm	1500mm
	W	79mm	79mm	79mm
	H	68mm	68mm	68mm
Weight		830g	1245g	1570g
Housing		Polycarbonate(PC)		
Diffuser		Polystyrene (PS)		
Replaceable light source		No		
Replaceable Control gear		No		
Glow wire test according to IEC60695-2-12		650°C		

LUXPOINT® LED Waterproof Batten - Lando

Technical Data

System Specifications

Power	AC mains
Operating Temperature	-10°C ~ 40°C
Storage Temperature	-20°C ~ 85°C
Lifespan L70/B50 at 45°C	50,000 hours
Lifespan L70/B50 at 25°C	60,000 hours
Number of switching cycles	50,000
Environment	indoor & outdoor
Ingress Protection	IP65
Impact Resistance	IK08
Safety Approval	CE, UKCA, RoHS
Mercury content	0.0mg
Warranty	5 years

Accessories



1. Through-wiring kit



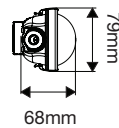
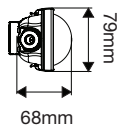
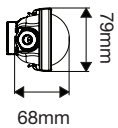
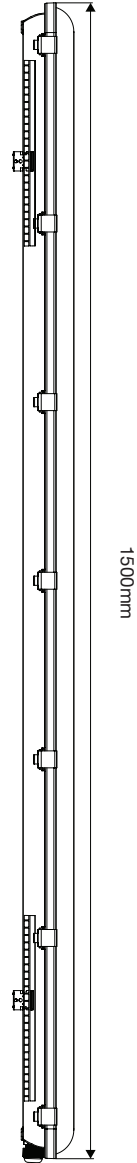
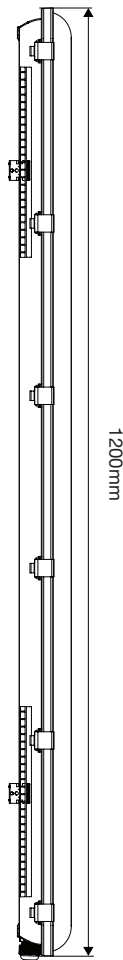
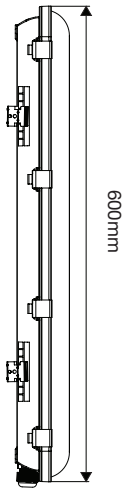
2. Emergency kit



3. Microwave sensor kit

LUXPOINT® LED Waterproof Batten - Lando

Dimension (Unit: mm)



Due to the special conditions of manufacturing process of LED, the typical data of technical parameters can only reflect statistical figures and do not necessarily correspond to the actual parameters of each single product which could differ from typical data.

Exceeding maximum ratings for operation voltage will cause hazardous overload and will likely destroy the LED module.

Exceeding maximum ratings for operation and storage temperature will reduce expected life time or destroy the LED module.

Specifications are subject to change without notice. Errors and omission excepted, always make sure to use the most recent release.

LUXPOINT® LED Waterproof Batten - Lando

Ordering codes

Fixture

Model No.	Wattage	CCT	Fixture Lumen	Light Source Lumen	Size(mm)	Item code	EAN-13
LP WP P01 06 20W 830	20W	3000K	2800lm	3000lm	600x79x68	TXGL25100045355	4897135738320
LP WP P01 06 20W 840	20W	4000K	3000lm	3200lm	600x79x68	TXGL25100045455	4897135738337
LP WP P01 06 20W 865	20W	6500K	3000lm	3200lm	600x79x68	TXGL25100045555	4897135738344
LP WP P01 06 20W 830/840/850	20W	3CCT	3000lm	3200lm	600x79x68	TXGL25100045655	4897135738351
LP WP P01 12 34W 830	34W	3000K	4760lm	5100lm	1200x79x68	TXGL25100045755	4897135738368
LP WP P01 12 34W 840	34W	4000K	5100lm	5400lm	1200x79x68	TXGL25100045855	4897135738375
LP WP P01 12 34W 865	34W	6500K	5100lm	5400lm	1200x79x68	TXGL25100045955	4897135738382
LP WP P01 12 34W 830/840/850	34W	3CCT	5100lm	5400lm	1200x79x68	TXGL25100046055	4897135738399
LP WP P01 15 68W 830	68W	3000K	9520lm	10200lm	1500x79x68	TXGL25100046155	4897135738405
LP WP P01 15 68W 840	68W	4000K	10200lm	10500lm	1500x79x68	TXGL25100046255	4897135738412
LP WP P01 15 68W 865	68W	6500K	10200lm	10500lm	1500x79x68	TXGL25100046355	4897135738429
LP WP P01 15 68W 830/840/850	68W	3CCT	10200lm	10500lm	1500x79x68	TXGL25100046455	4897135738436

Service contact:
Traxon Technologies Ltd.
Room 113, Wireless Centre, 3 Science Park East Avenue, Shatin,
Hong Kong, China
www.traxon-ecue.com

Traxon Technologies Europe GmbH
Karl-Schurz-Str. 38, 33100 Paderborn, Germany

LUXPOINT® LED Waterproof Batten - Lando

Ordering codes

Accessories



1. Through-wiring kit



2. Emergency kit



3. Microwave sensor kit

Model No.	No.	Type	Item code	EAN-13
LP WP P01 06 TH	1	600mm Through-wiring kit	TXGL25100046555	4897135738443
LP WP P01 12 TH	1	1200mm Through-wiring kit	TXGL25100046655	4897135738450
LP WP P01 15 TH	1	1500mm Through-wiring kit	TXGL25100046755	4897135738467
LP WP P01 ST EM 1H	2	Emergency kit	TXGL25100046855	4897135738474
LP WP P01 ST MS	3	Microwave sensor kit	TXGL25100046955	4897135738481
LP WP P01 ST DMS	3	DC Corridor Microwave sensor kit	TXGL25100047055	4897135738498

Service contact:
Traxon Technologies Ltd.
Room 113, Wireless Centre, 3 Science Park East Avenue, Shatin,
Hong Kong, China
www.traxon-ecue.com

Traxon Technologies Europe GmbH
Karl-Schurz-Str. 38, 33100 Paderborn, Germany